



PROCESS VESSELS

escher

PART OF IV



escher
THE HAGUE

2500

escher

PART OF IV

Escher Process Modules

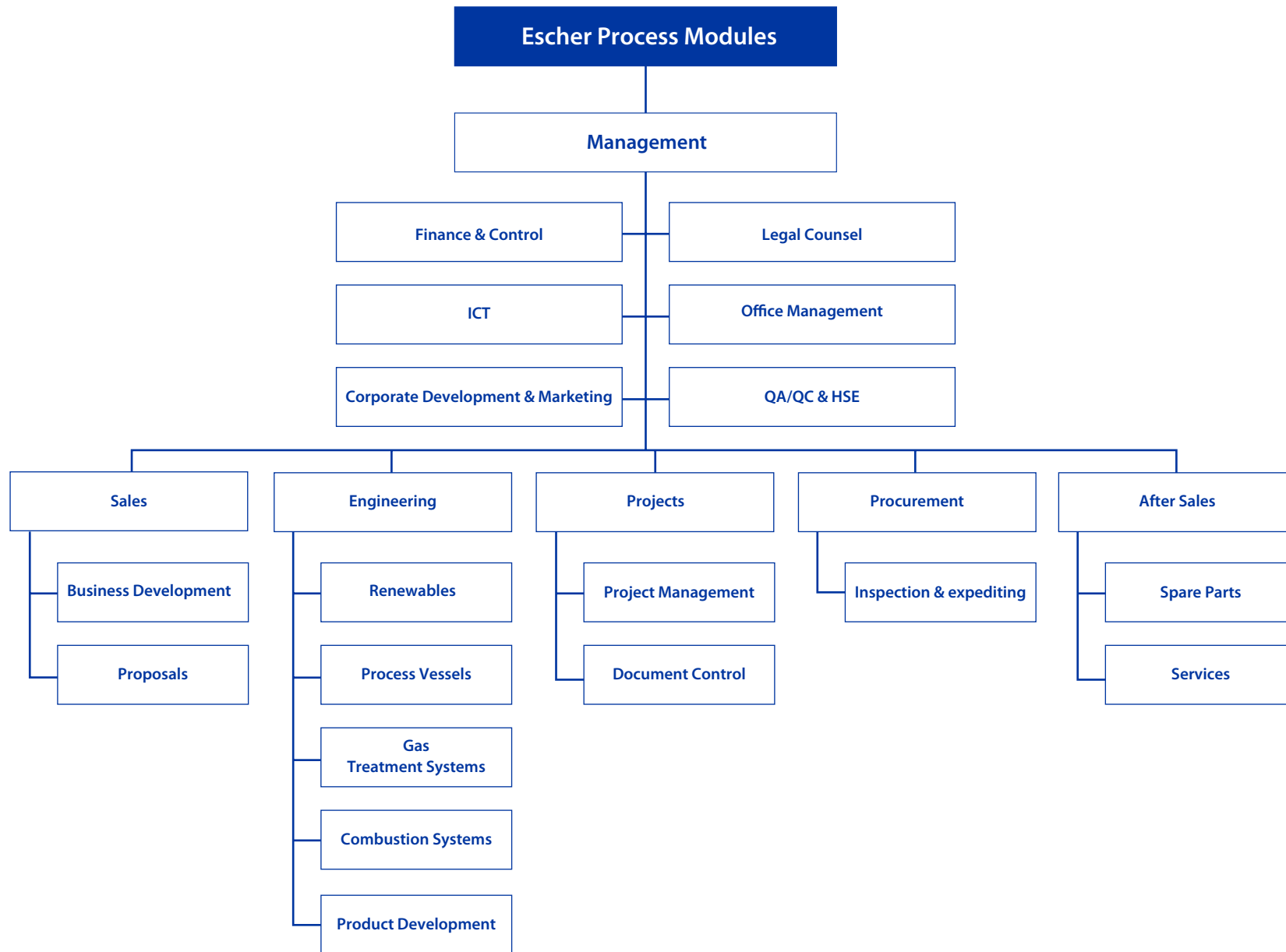
Escher Process Modules is a leading global Process Technology House and provider of process solutions since 1925. Being part of Iy, a worldwide operating engineering company listed in the top 10 of Dutch engineering companies.

Escher has all disciplines in-house for complete project execution. Our strength is our genuine passion for technology which results in unique and specialist know-how of the markets in which we operate, and enables us to be constantly at the forefront of advanced process solutions. We design and engineer process vessels in accordance with industry design codes to meet the quality and efficiency requirements of our customers. Our product range includes:

- ▶ Renewable systems (such as Ammonia Cracking, Hydrogen Treatment, and Carbon Capture)
- ▶ Process Vessels (such as Separators and PX Crystallizers)
- ▶ Gas Treatment Systems (such as CO₂ and Gas Dehydration, and Fuel Gas Treatment)
- ▶ Combustion Systems (such as Flare and Vent systems)

Our engineers are technicians of the highest level who think outside the box and translate even the most complex issues into solutions that meet the strictest criteria of product integrity and safety. In each project we strive to exceed the expectations of our clients where possible. Escher is recognised for its adherence to SHE and QMS systems (ISO 9001 & ISO 14001), highlighting our reliability, capability and commitment to social responsibility.







Process Vessels

Process vessels are essential components in the oil, gas, and petrochemical industries. These vessels play an integral role in efficient production and processing, ensuring optimal separation, reaction, and purification processes.

With over 20 years of experience, Escher Process Modules is known for providing high-quality, reliable, and efficient process vessels. Our extensive expertise ensures that our gravity separators, rotating disc contactors, and PX crystallizers meet the highest industry standards. Clients worldwide rely on our solutions for their critical processing needs, benefiting from our commitment to innovation and sustainability.

Our process vessels not only enhance production efficiency but also support greener operations, in line with the industry's shift towards more sustainable practices. Escher Process Modules remains committed to delivering top-tier solutions that drive success in the oil, gas, and petrochemical industries.



Products

We engineer and design Process Vessels accordance withing to industry design codes to meet our satisfy customer's the quality and efficiency requirements of our customers. Our product range includes:

- ▶ **Gravity Separators**

Escher's enhanced gravity separators use internals for efficient flow distribution, ensuring high performance and compact size.

- ▶ **Crystallizers**

Escher's continuous, cooling-based crystallizer is efficient, low-maintenance, and reliable, with a flexible design. In processes like paraxylene production, it cools the solution to form crystals, which are then scraped off and discharged.

- ▶ **Extractors**

Developed in the late forties, the Rotating Disc Contactor (RDC) has been widely used in the petroleum and chemical industries. It is a flexible extractor for high throughputs, dispersing two counter-current phases with internal rotating discs.



Key Benefits

Advantages of Escher Pressure Vessels

- ▶ Designed in accordance with national and international codes and standards
- ▶ Available in various materials, including carbon steels, stainless steels, and clad materials
- ▶ Fully responsible during engineering, procurement and construction
- ▶ Customised to meet customers' specifications
- ▶ Designed in accordance with international standards



Main Components

- ▶ High Pressure Vessels
- ▶ Low Pressure Vessels
- ▶ Static Internals
- ▶ Rotating Internals
- ▶ Cooling Jackets
- ▶ Base frames
- ▶ Ladders and Platforms
- ▶ Instruments
- ▶ Valves
- ▶ Piping



Scope of Supply

- ▶ Detailed Design
- ▶ Engineering
- ▶ Procurement
- ▶ Construction
- ▶ Testing
- ▶ Transportation
- ▶ Installation Supervision
- ▶ Operational Support
- ▶ Maintenance Services
- ▶ Spare Parts



Operational Support

Escher provides life cycle support and around-the-clock assistance, ensuring the quick delivery of essential spare parts to minimise potential downtime. We cover everything from spare parts to support during commissioning, start-up, and normal operations. Upon request, Escher can facilitate Warehouse Services, keeping dedicated critical spares in stock, ready for your immediate needs. Our other services include inspections, maintenance support, and lifetime extension programmes for optimal performance.

For any queries or urgent needs, reach us at aftersales@escher.nl or **+31 88 943 3600**.

Would you like to know more about the possibilities?

Our specialists will be pleased to share ideas and thoughts about Process Vessels.

E-mail Maarten Brandenburg and/or Martijn In der Maur:
sales@escher.nl or call **+31 88 943 3600**.



Contact

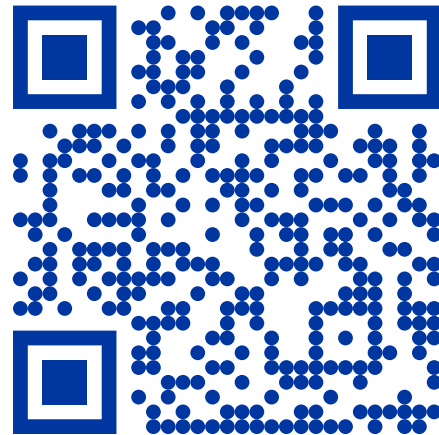
Escher Process Modules

Noordhoek 37 +31 88 943 3600

3351 LD Papendrecht sales@escher.nl

The Netherlands

Do you prefer a digital version of this brochure? Download it from our website.





PART OF IV

www.escher.nl